



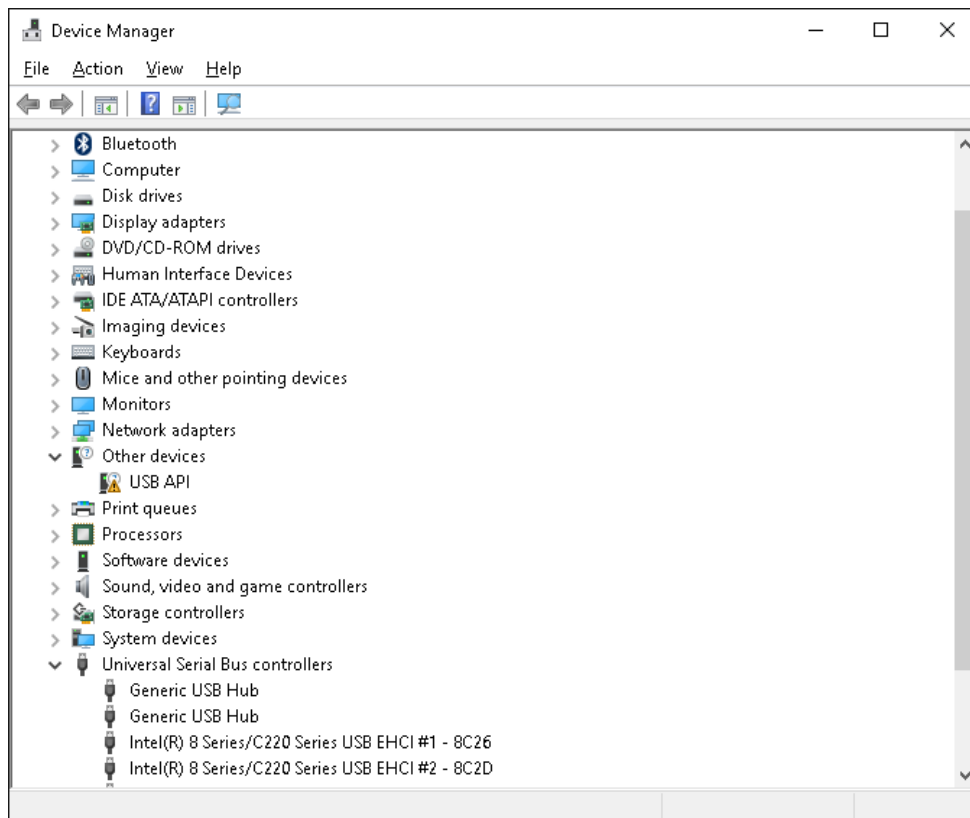
This Help Guide refers to the EasyLog USB Data Loggers

This help document offers guidance on manual driver installation for your EasyLog USB data logger.

You will need administrative privileges on your PC.

For Windows 7, 8 and 10

To start: Plug your logger in and open your computer's Device Manager. If you've never accessed the Device Manager before, the easiest way to find it is by clicking your Start Menu. Then, use the search function and search for "Device Manager." When you open it up, you should see something like this:



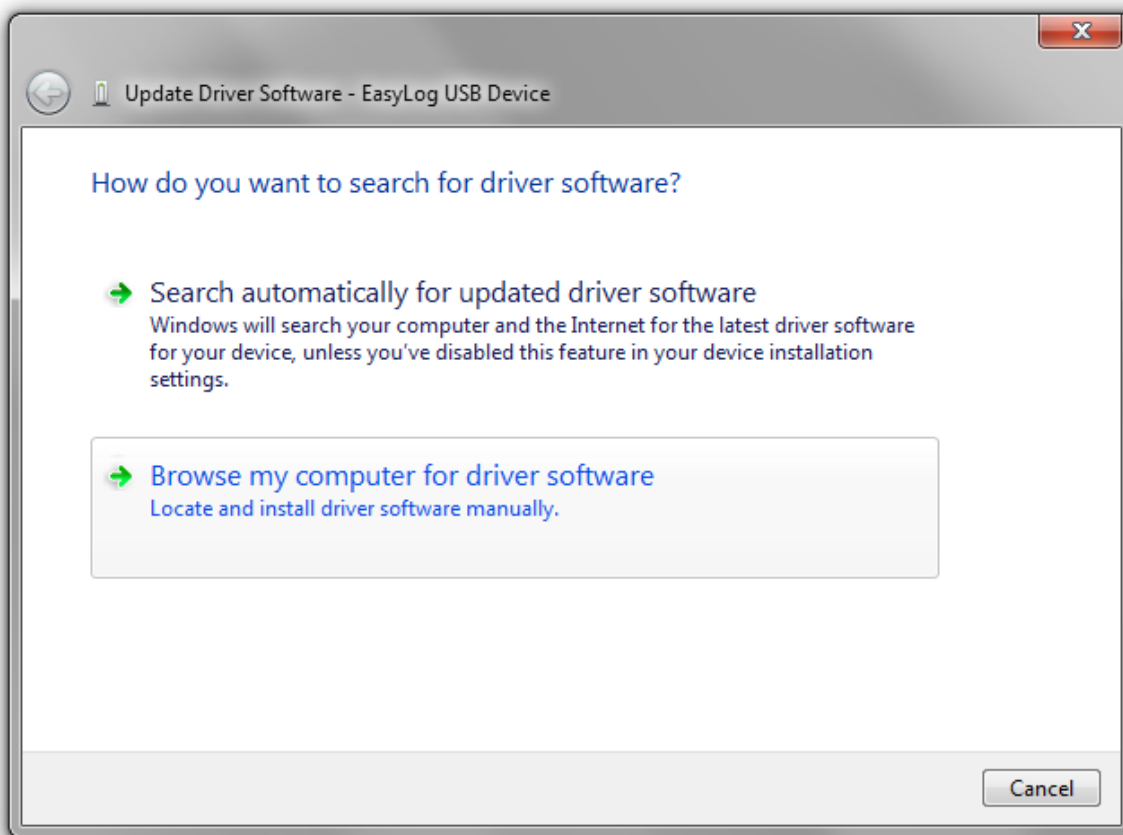
Expand the "Universal Serial Bus controllers" by clicking the arrow to the left of the text. If the driver has been installed correctly you would see an entry "EasyLog USB Device". If the logger is plugged in but not appearing in this list, there will be an entry under "Other devices" as shown in the image. This will either be "USB API" or in some cases "Unknown Device". This indicates that the driver has not been installed and the logger is therefore an unknown device on the computer. If you are not sure if the Unknown Device is your logger, remove the logger while keeping Device Manager open and then plug the logger back in. The Unknown Device should disappear from and then reappear in the list.



This Help Guide refers to the EasyLog USB Data Loggers

This help document offers guidance on manual driver installation for your EasyLog USB data logger.

If you right click on USB API (or the Unknown Device) and “Update Driver Software.” You’ll see this screen:

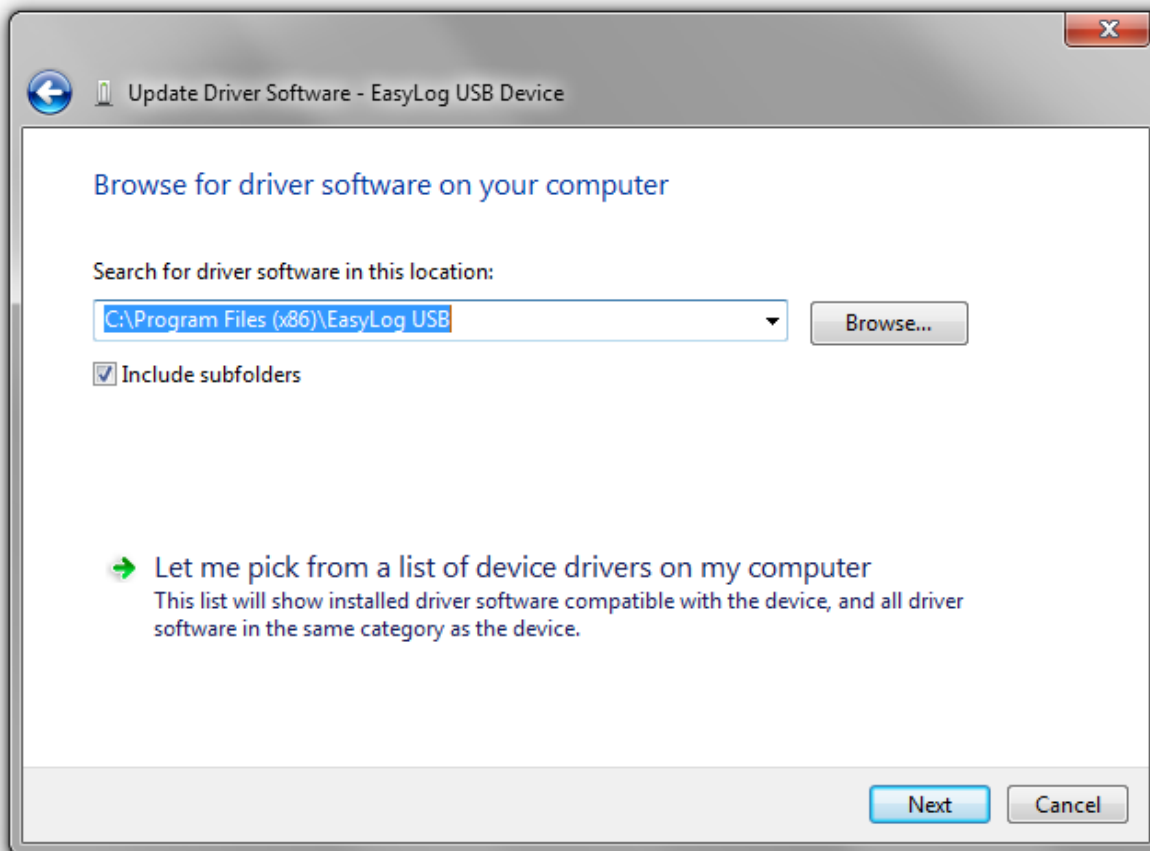




This Help Guide refers to the EasyLog USB Data Loggers

This help document offers guidance on manual driver installation for your EasyLog USB data logger.

You'll want the second option, "Browse my computer for driver software." Then point the search to the directory where the software is installed:



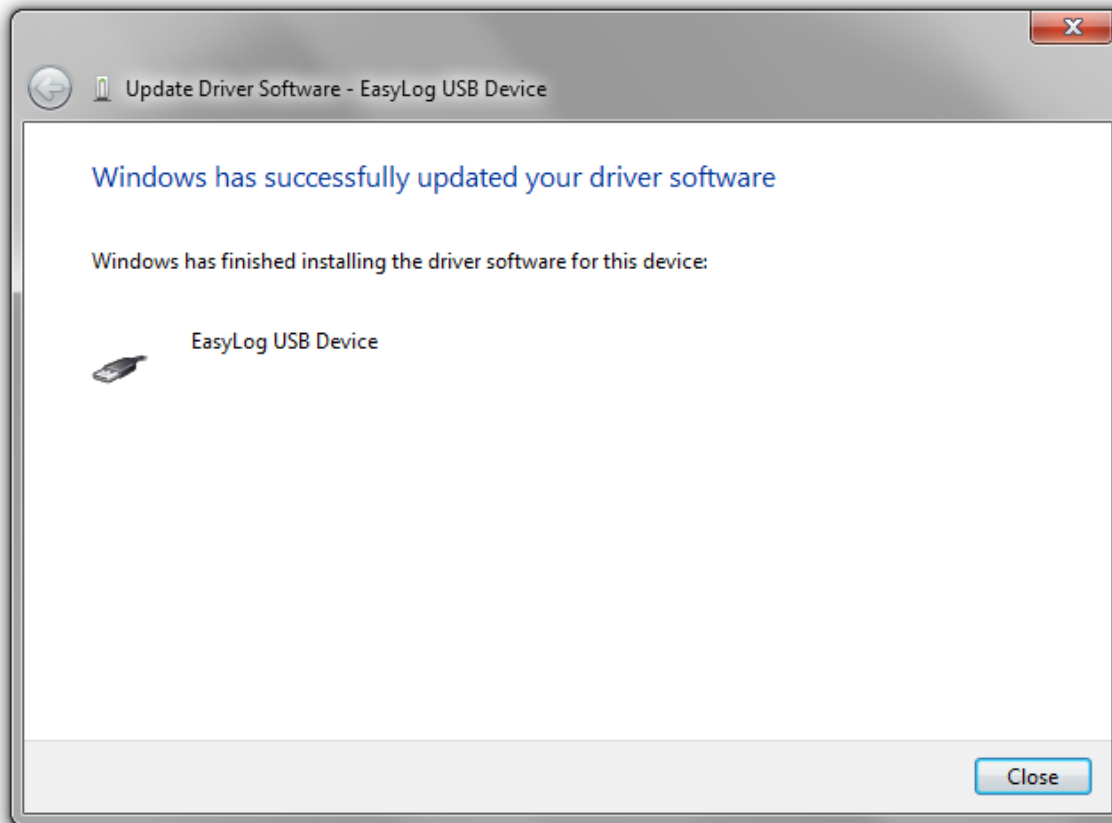
Make sure "Include subfolders" (see above) is checked, then hit "Next."



This Help Guide refers to the EasyLog USB Data Loggers

This help document offers guidance on manual driver installation for your EasyLog USB data logger.

After a brief scan, you should get an indicator that it was a success:



Once you get this this screen, you can click Close; your logger should now work with the EasyLog USB Software.